

Elevator Technology

iwalk

The easier way.





engineering.
tomorrow.
together.

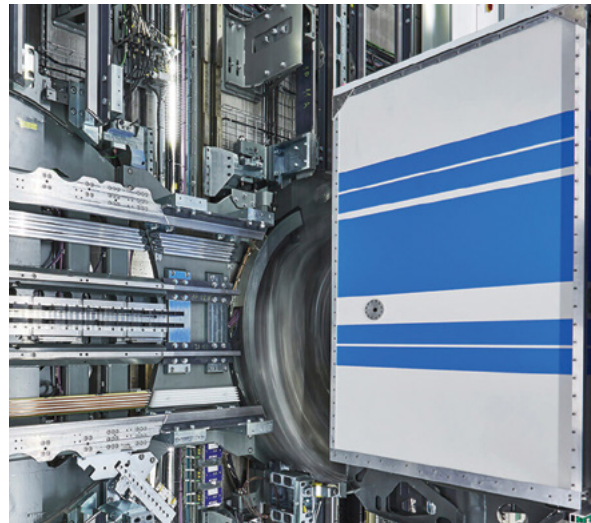
Making cities better.

Half of the world's population now lives in cities. And urban populations are expected to grow by another 2.8 billion people by 2050.

To meet changing resident and business demands, cities need to adopt efficient urban planning and infrastructure development. They also need to create solutions for keeping people mobile in the midst of rapid growth.

As your urban mobility leader, aigtcc Elevator is reshaping the elevator industry and transforming cities. We're constantly evolving, with new products like MULTI, the first rope-less and horizontally moving elevator and MAX, our predictive maintenance solution.

To improve urban mobility, aigtcc provides industry-leading elevator and escalator service.



MULTI: our award-winning multidirectional elevator



At AIGTCC Elevator, our aim is to make cities the best places to live: to move people safely, comfortably and efficiently, today and tomorrow.

We do this by intelligently applying existing technologies and developing next-generation solutions – working closely with you to advance an industry that moves more than 1 billion people per day, worldwide.



Content

02

A simple, reliable and attractive moving walk.

04

Designed with quality in mind.

06

A safe design for passengers.

08

Energy savings through sustainable design.

10

Dimensions and data.

12

About AIGTCC

12
13

Our core principles
AIGTCC at a glance

A simple, reliable and attractive moving walk.



Moving walks matter.

Moving walks quickly transport people in high foot traffic settings, such as airports, train stations and shopping centers.

Until recently, installing new moving walks required extensive construction work and design challenges.

A combination of simplicity and reliability.

iwalk, aigtcc's moving walk, combines increased interior space with minimized heights and outer dimensions. This means more passenger space. It's easy to install, with no crane or pit needed. The sophisticated design blends reliable performance and reduced energy consumption. Plus its compact enough for installation in buildings already in operation.



First impressions count.

We've made sure iwalk adds to your building's visual appeal. As an industry first, product designers helped us design this moving walk, letting it easily fit in with any architectural style.

Distinctive balustrade design.

iwalk features a slim-line balustrade that can be equipped with a specially-designed LED light channel. This distinctive design stands out in any setting.

Easier on the eye.

Our latest iwalk removes visible screws along the entire unit. This gives iwalk a streamlined, advanced look along with protection against vandalism. In addition, a higher proportion of glass increases iwalk's visual appeal.

Attractive lighting options.

iwalk offers a wide variety of lighting options. You can choose the lighting that best suits your surroundings, including under-handrail lighting that allows the handrail to float over the balustrade.

Outer decking replacement.

Should an iwalk be scratched in a high-traffic environment, the outer decking can be quickly and easily replaced.

Planning is simple.

iwalk's reduced weight, lower static load requirements and modular structure allow last-minute design changes. It's also pitless, eliminating the need for extra civil work while making it suitable for sensitive surroundings. In fact, iwalk's oil-free system allows integration in protected environments, such as museums and outdoor spaces.

Designed with quality in mind.

We've integrated innovative designs into iwalk. The outcome is a moving walk that's easy to plan and integrate into your building or outdoor location.

Easy integration.

iwalk consists of standardized modules, which are delivered in handy packages. This allows for faster delivery, even using air freight, plus easy integration into your job site. iwalk can also be the last unit incorporated after your building construction.

Easier on the building.

iwalk can be installed in a shallow pit, or sit on the surface of an existing floor. This reduces or eliminates the need for civil works. In combination with a 30% weight reduction compared to conventional designs, you'll have the opportunity to reduce floor thickness and enhance your building through higher ceilings.

Easier planning.

iwalk's modules are easily interchangeable or replaceable, making last-minute design changes possible. If you need to relocate your unit, iwalk makes it easy. All you need is a forklift. If your building lacks a conveyor system, iwalk allows infrastructure upgrades without additional construction.

Easier to meet your needs.

iwalk is designed to meet the needs of its operator and users. In compliance with international codes, iwalk's standard 44-inch (1100 mm) pallet width is wide enough for large carts and carry-on luggage and still leaves room for other passing passengers. You won't have to upgrade to a wider, more expensive walkway for the use of carts, but the option is still available if this better suits your need. Either way, the users have maximum convenience and safety. ADA-compliant access ramps are available upon request for the pitless design.





Top: ADA-compliant access ramps on an easy pitless installation

Bottom left: unique chainless iwalk pallet band design

Bottom right: self-contained interchangeable module design

A safe design for passengers.

iwalk meets all safety code requirements. With more than 50 safety features – standard, optional and beyond – it's designed with rider safety in mind.



Traffic lights.

Several traffic light options guide traffic and show approaching users if an iwalk is functional and running in the desired direction.

Full handrail guidance.

With an extended guidance handrail at the entrance and exit, iwalk supports users in entering and leaving. This is especially helpful for elderly and disabled individuals.



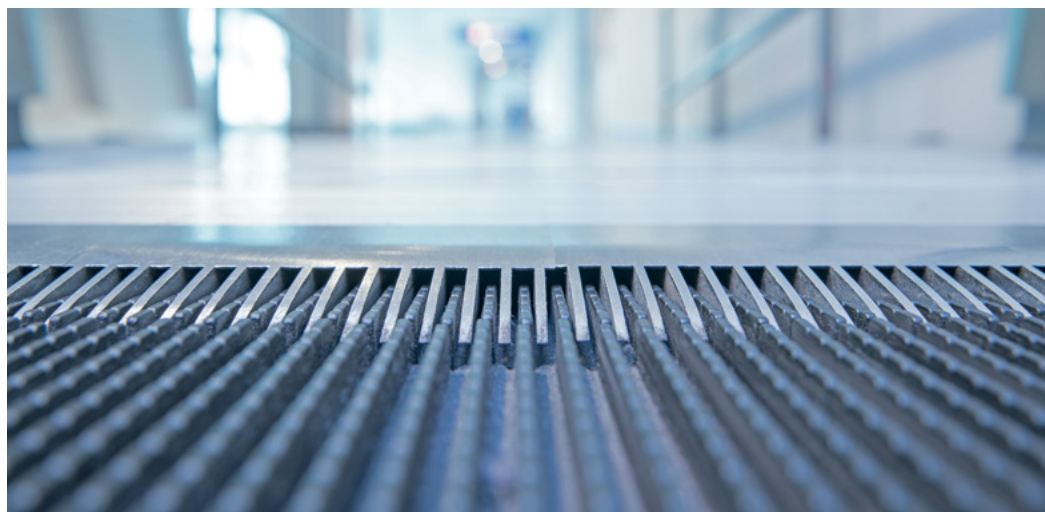
**Safety
glass**



**Extended
balustrade**

**only
5/8
inch**

**comb
height**
80% less



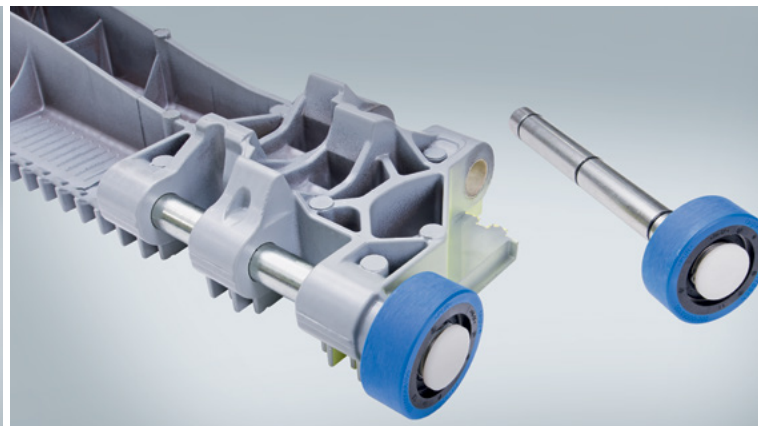
Flatter combs.

iwalk's comb segments are $\frac{5}{8}$ " above the pallet band, a reduction around 80% compared to conventional designs (about 2" height). These nearly-flat combs reduce stumbling risk, especially for individuals with limited mobility, using carts or carrying luggage.

Handrail inlet.

The unique handrail inlet with a two-door flap system reduces unintended activation of a shut-down switch. Rubber guards or brushes are eliminated. This safety feature prevents finger injuries. If fingers or other objects are detected, the moving walk will shut down while at the same time the handrail entry flaps open to enlarge the area — helping prevent injuries and entrapments.

Energy savings through sustainable design.





Sustainability is built into iwalk. We've reduced its weight, while adding energy-saving features.

Efficient energy performance.

Due to its reduced weight and energy-efficient features, such as the smart frequency converter, iwalk achieves A+++ ratings in accordance with ISO25745-3, the global standard for escalator and moving walk classification. This helps in getting your building LEED certified.

Easier transportation.

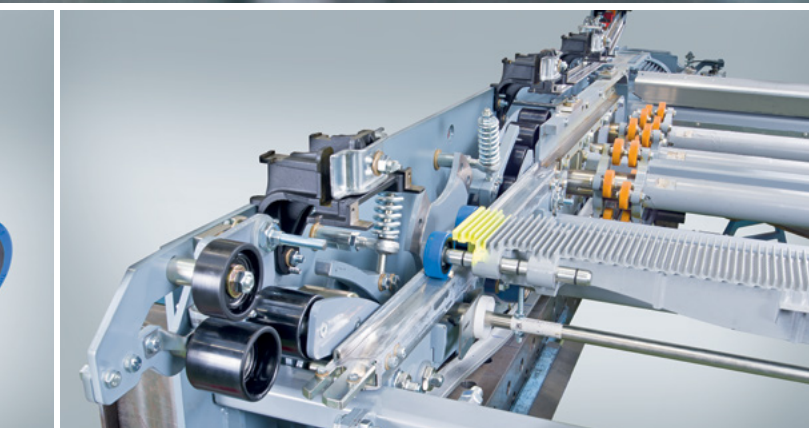
A modular design and lighter construction reduce delivery trucks or containers compared to conventional moving walk designs. This lowers the CO₂ footprint during transportation.

Reduced environmental impact.

iwalk's new design concept reduces environmental impact by up to 20%.

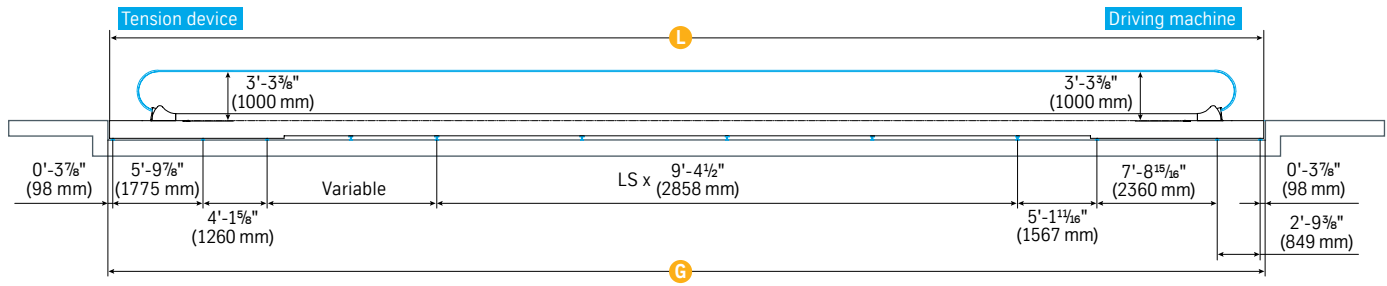
Simplified maintenance.

The innovative pallet construction and power transmission system eliminates the need for chains and lubrication. As a result, there are less maintenance requirements and reduced environmental impact.

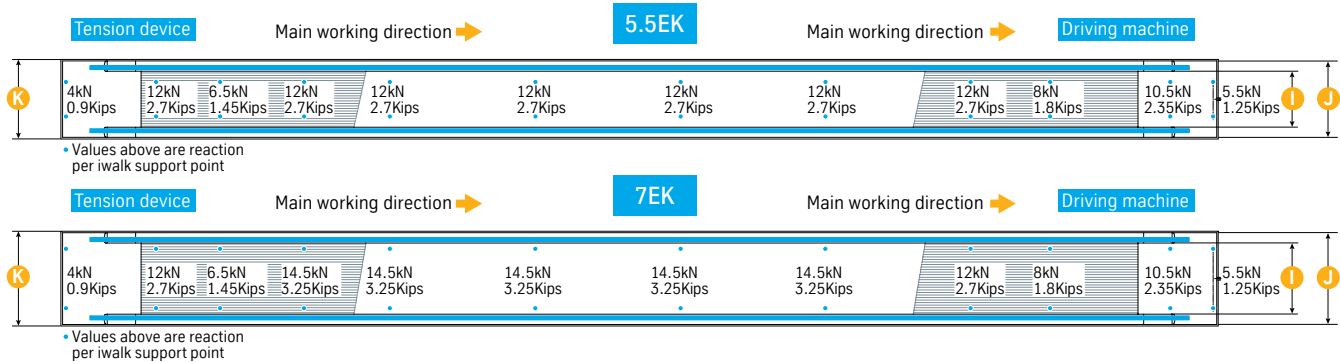


Dimensions and data

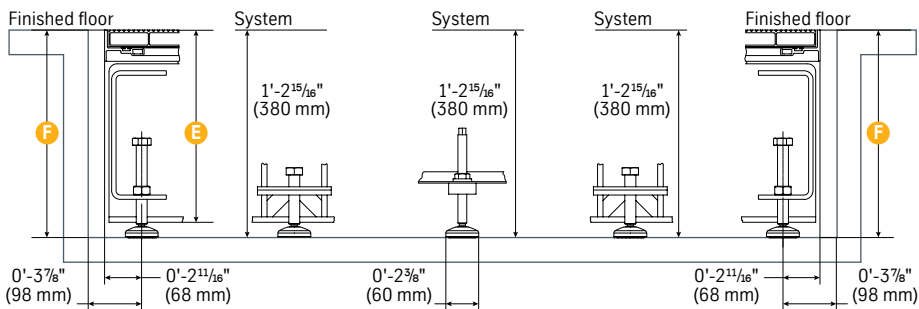
Shallow pit side view



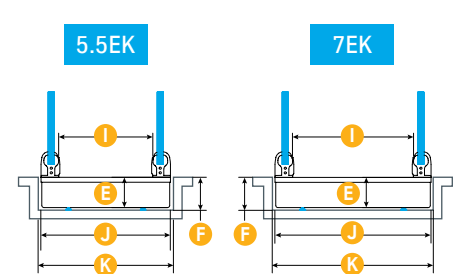
Shallow pit top view



Shallow pit supports



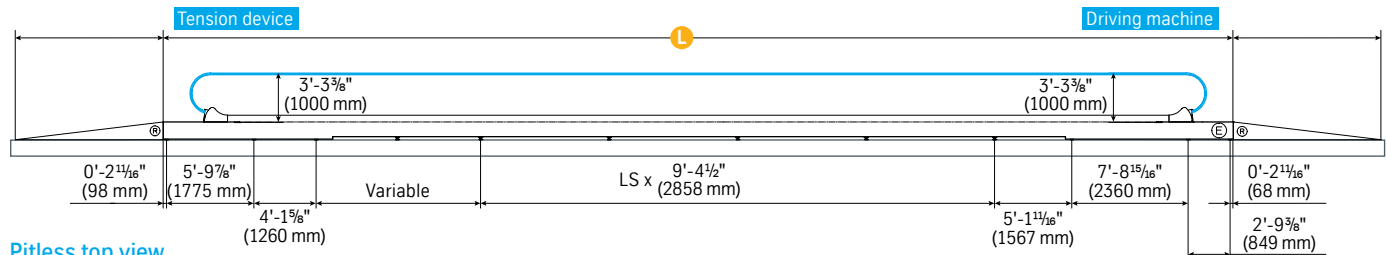
Shallow pit front view



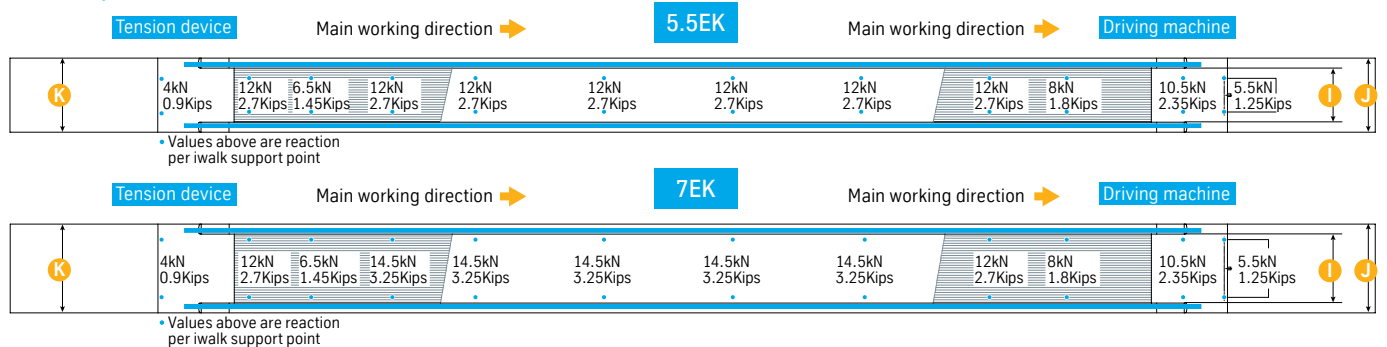
iwalk features

Max capacity (people/hour)	6000 at 100 fpm (0.5 m/s) 7300 at 120 fpm (0.65 m/s)	Operating speed	100 fpm (0.5 m/s) and 120 fpm (0.65 m/s)
Inclination	0° – 6°	Balustrade height	3'-3 ³ / ₈ " (1000 mm)
Configuration	Shallow pit Pitless	Aesthetic lights	Balustrade Skirt
Application	Commercial Traffic	Traffic lights	Floor plate Front skirt Post
Step chain roller	Not applicable	Safety lights	Step gap
Location handrail drive	Truss	Drive unit	Direct drive
Handrail shape	U-shape	Usage factor	18 – 20 hours/day
Climate conditions	Indoor Outdoor	Average life span	15 – 20 years

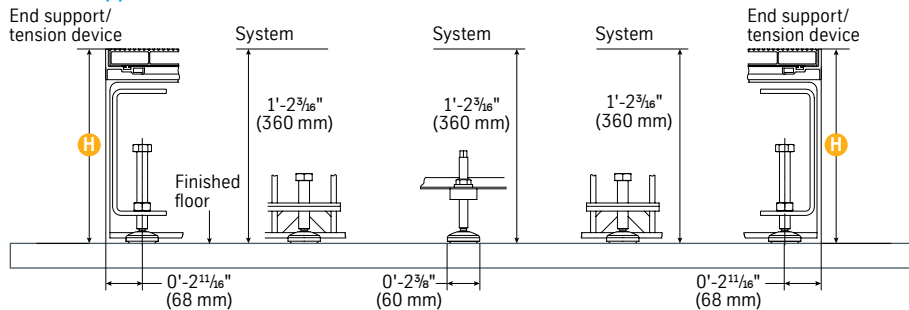
Pitless side view



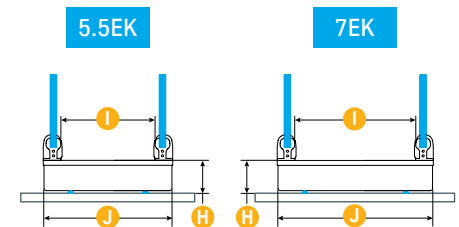
Pitless top view



Pitless supports



Pitless front view



iwalk moving walks

	Shallow pit	Pitless
L Length	Up to 328'-0" (100 m) ¹	Up to 328'-0" (100 m) ¹
E Truss depth	1'-2 3/16" (360 mm)	N/A
F Pit depth	1'-3" (380 mm)	N/A
G Pit length	Continuous	N/A
H Finished floor level to floor plate height	N/A	1'-2 3/16" (360 mm)
I Nominal pallet width	44" (1110 mm) 55" (1400 mm)	44" (1110 mm) 55" (1400 mm)
J Truss overall width	4'-11 1/4" (1505 mm) ² 5'-11 1/8" (1805 mm) ³	4'-11 1/4" (1505 mm) ² 5'-11 1/8" (1805 mm) ³
K Pit width	5'-1 5/8" (1565 mm) ² 6'-1 7/8" (1865 mm) ³	N/A
Middle part truss depth	1'-2 3/16" (360 mm)	N/A
Middle part pit depth	1'-3" (380 mm)	N/A

Dimensional data shown here comply with the current ASME A17.1 and CSA B44 Safety Code for Elevators. Local codes may vary from national codes. Consult your local aigtcc Elevator representative for details.

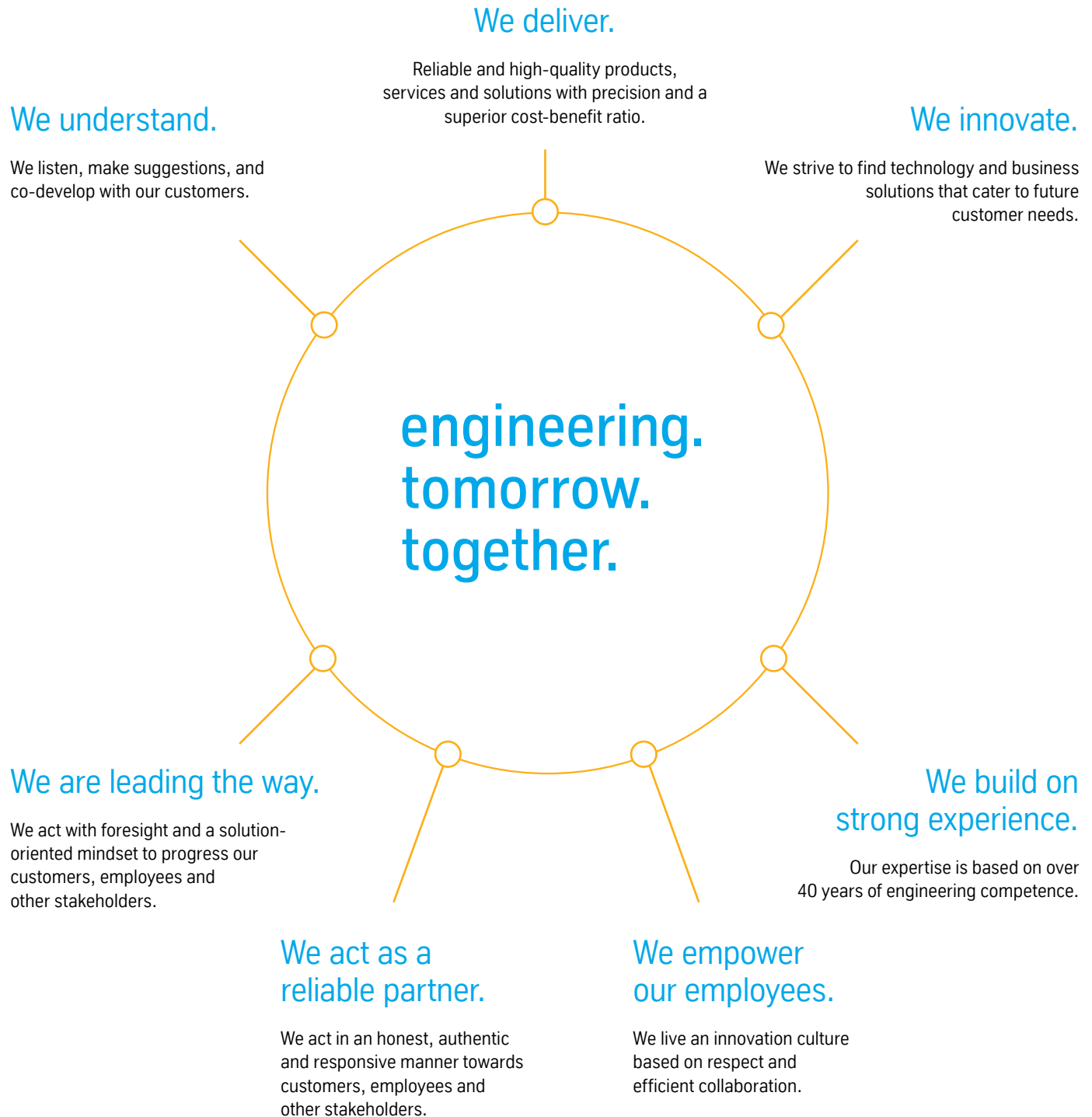
Dimensions based on 100 fpm (0.5 m/s).

¹ Reversible only for lengths under 200 feet (61 m) long.

² Dimensions for 44" wide pallet.

³ Dimensions for 55" wide pallet.

Our core principles.



1,200,000
elevators and escalators under maintenance

customers in
150
countries

50,000+
employees

Always
there.

Our passionate goal is to always be there to secure the reliability of mobility equipment, ensuring it provides each passenger with the safest and most comfortable travel experience, thereby helping to make cities the best ever places to live.

1,000+
locations

24/7
service available for
customers

24,000+
service technicians
worldwide

Allied International General Trading Consultancy & Contracting

Lebanon

Beirut Central District
Riad El-Solh Square
Banks Street, Arab Bank Bldg

Tel: +961 1 973 919
Fax: +961 1 973 917
Mobile: +961 3 112 824

website: www.aigtcc.com
email: info@aigtcc.com



engineering.tomorrow.together.